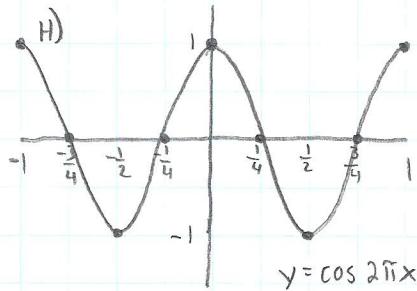
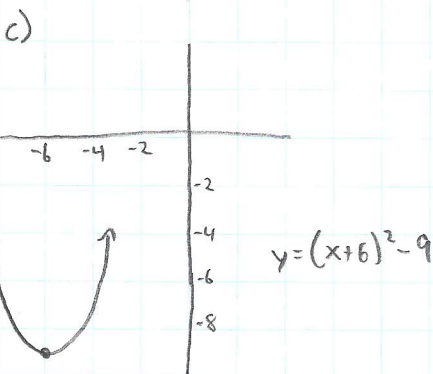
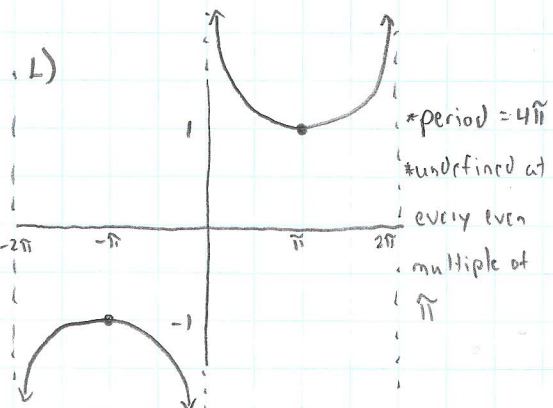
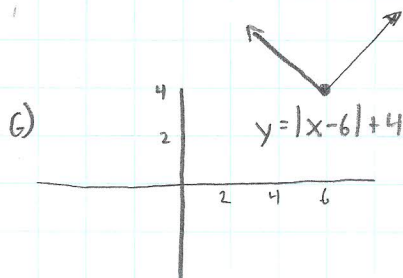
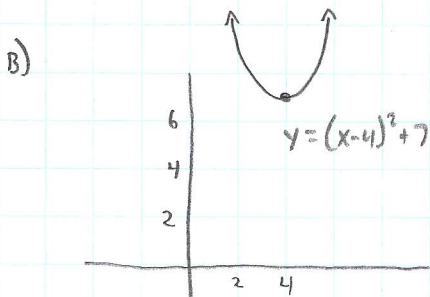
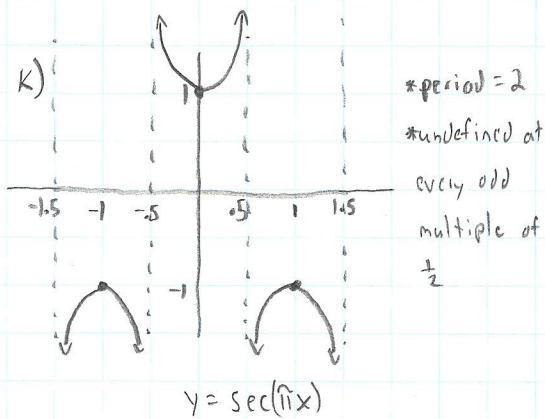
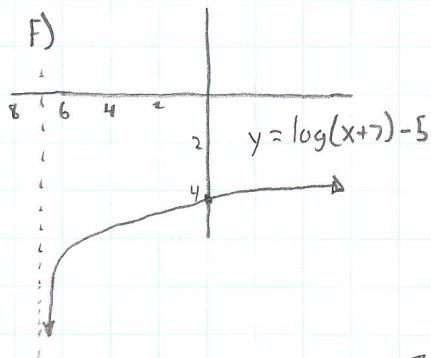
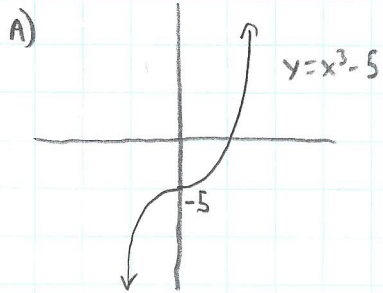
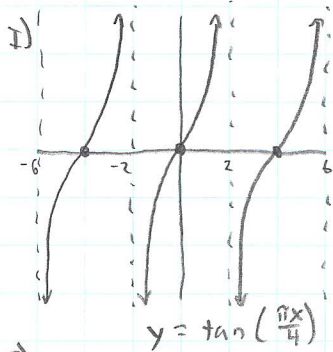
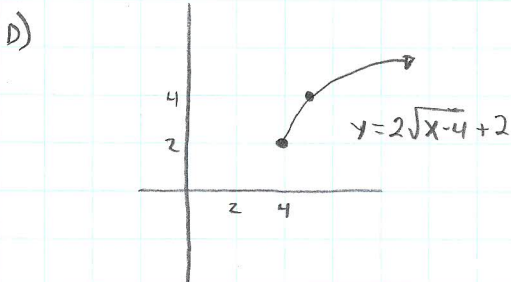


PS 1.7

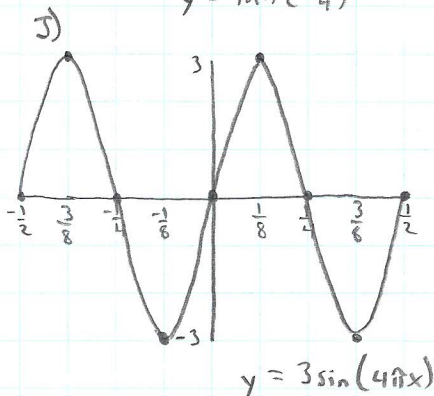
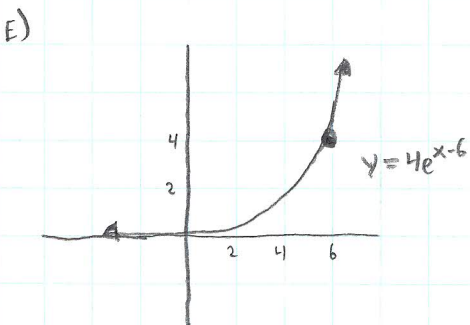
①



period is  $\frac{2\pi}{b}$  for  $y = \cos bx$   
here,  $b = 2\pi$



period is  $\frac{\pi}{b}$  for  $y = \tan bx$   
here,  $b = \frac{\pi}{4}$



period =  $\frac{2\pi}{4\pi} = \frac{1}{2}$   
amplitude = 3

Look at this graph on your calculator to see the effect the period has on this graph!